

ACCENT

TENNESSEE STATE UNIVERSITY

OCTOBER 13, 1978



Mrs. Edwina Isibor, wife of Dr. Edward I. Isibor, shows off new Van.

Dupont Donates Van

"This is one of the most important events in the history of the school, happily stated Dr. Edward Isibor Dean of the School of Engineering at the dedication of a "Van" donated by Dupont.

H. Gaines, Director of Personnel at Dupont, was on hand for the dedication and commented that Dupont was proud and happy to be associated with Tennessee State University.

With the new Van, Dr. Isibor hopes to increase the number of in-state students by getting to more high schools in the area.

Freshman Honor Students Inducted

The Induction Ceremony for freshman Honor students in to the Honors Program was held on Sunday, October 8, at 3:00 p.m. in the Women's Building. The speaker for the occasion was Dr. Elizabeth Reed, Director of Pre-Service Field Experience.

Dr. McDonald Williams, together with Dr. Joseph Riley and Dr. Wallace Kay, Directors of the Honors Programs at Memphis State University and the University of Southern Mississippi, respectively, will be program Participants at the Second National Conference on Academic Advising, at Memphis State University, Oct. 8-11.

BIPPIE Contestants Being Sought

The second annual national competition by the National Student Educational Fund, called the Better Information Project: Prizes in Education (BIPPIE), has been kicked-off by the Washington, D. C.-based NESF.

\$500 awards will be given to each of the 12 best entries in the competition designed to encourage and recognize original student-produced international materials.

Individual students and student organizations are eligible to enter the competition, with materials in any media aimed at improving the information available to students, concerning campus programs, opportunities, and experiences. Materials must have been produced during the 1977-78 or 1978-79 academic years.

Application packets are available from the National Student Educational Fund, 2000 P Street, N. W., Suite 305, Washington, D.C. 200036.

Each of the 12 winners will win a trip to the Nation's capital city, at which time the prize money will be awarded at a national information celebration. Last year, over 300 students entered the 1977-78 BIPPIE contest and NSEF is looking for that man and more for the 1978-79 contest.

* * * *

UNA Workshop Held

The Nashville Chapter of the United Nations Association sponsored a workshop entitled "Transfer of Science and Technology to the Developing Countries," at Belmont United Methodist Church, Sept. 26.

Dr. C. L. Fenderson, assistant professor of Animal Science here at the University, led the Agriculture session while Meharry Medical College professor, Dr. Jack Gershan discussed Food and Nutrition.

Curtis Farrar, a member of the U. S. State Department's policy planning staff was the featured speaker following a dinner for the workshop. Farrar discussed issues related to development assistance and science and technology.

Know Your Campus

Sixty-six years ago, Tennessee State University was merely a dream of a few Tennesseans who felt the urgent need to educate black teachers in order to serve the State of Tennessee and to improve the efficiency of its agricultural and industrial workers.

On June 19, 1912, three years after an act by the General Assembly of 1909 approving normal schools for the state, Tennessee Agricultural and Industrial State Normal School for Negroes opened its doors for the first time to admit 247 students. Because the emphasis on "agricultural and industrial" education represented a departure from the educational traditions of the community, the school was not entirely welcomed to the city of Nashville. From the first day of its existence, Tennessee A&I State Normal School had to compete with such nationally known and highly classical liberal arts institutions as Fisk University, Vanderbilt University, Meharry Medical College and George Peabody College to name only a few.

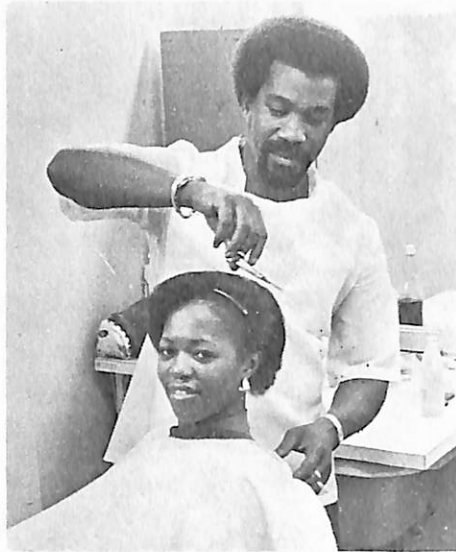
It was expected that because of politically controlled educational institution, lack of support, low standards and a variety of other problems, the idea of an agricultural and industrial institution would diminish. However, by the fall quarter of 1912, the school had flourished and a new era in education of blacks was launched.

Under the guidance of President, William J. Hale, the early years of the institution's history, characterized by bitter struggle for existence, brought about a spirit of togetherness and the motto of the institution: "Think, Work, Serve." Its challenge was "Enter To Learn, Go Forth To Serve."

During the last few years of the 1912-22 era, Tennessee A & I Normal School became larger and stronger. Throughout this time the school sought to gain respect, attract students, promote agricultural and industrial education and improve the quality of both its program and student body.

Today, that dream of yesterday has been enlarged, intensified and magnified and brought to reality with over 5,800 students, over 1,000 full and part time employees, seven schools, thirty departments and thousands of alumni.

By Alumna Amanda Martin



TSU's barber, William Jones, located in the SUBG, demonstrates style and technique on staff member, Eloise Link.

Donald L. Cook

PROFILE

By Lanese Campbell

With the name Donald L. "Cook", where else would you expect to find the manager of the A. R. A. Food Service but in the kitchen of the Student Cafeteria.

"There's never a dull moment", said Cook, who spends nine to ten hours a day moving around the cafeteria making sure all the students are fed properly. Preparing meals for the 950 to 975 students who come through the cafe for lunch and dinner is difficult because of the students eating habits. "Students from different backgrounds have different eating habits."

To remedy this problem the Student Government Association (SGA), along with students who work in the cafeteria gave ideas of what the students like and dislike.

Those students who have meal cards are allowed unlimited servings on everything but entries of which they can only have two. Those who do not have meal cards but wish to eat in the cafe may do so for a price of \$1.50 for lunch and \$1.80 for dinner.

Not only does the food service prepare meals for the students but special banquets luncheons and meals for the faculty as well.

Cook became interested in food service while majoring in Business at Bethune Cookman and working in the school cafeteria. He added "I would never give up the food service."

Jobs Available

Secretary-Social Science Lab; Sociology.

To be filled as soon as possible. High School Education or recipient of an associate degree from a business college, or at least two years of secretarial experience.

Secretary-Home Economics. - To be filled ASAP. High School Diploma excellence in stenographic and secretarial skills, excellence in writing skills.

Secretary-Bursar. - High School Diploma, minimum of two years experience ability to communicate and establish rapport with students, faculty, staff, administration and alumni.

Secretary-Special Programs. - Should be able to type 50 wpm, limited amount of record keeping, and general knowledge of secretarial work.

Secretary-English Department-Efficient use of basic skills of composition; preferably two or more years of college but will accept high school graduate where courses in business have been taken; experience in the use of office machines.

Secretary-Self-Study (SAC) - Ability to take shorthand and transcribe minutes of meeting; familiar with Tennessee State University or other University system highly desirable.

Secretary to Foreign Student Advisor-Admissions and Records.-High School Diploma-Secretarial experience and preferably some post secondary training in Business.

Secretary-Agriculture - Some experience desired in typing, bookkeeping and routine office work. Minimum typing speed as specified by the Personnel Office (55 wpm). Knowledge of office filing systems.

Typist Part-Time-Biology. Type file and keep budget accounts 15 hours per week.

Business Building To be Dedicated

Dr. John T. Masten, Acting Dean of the School of Business, is sponsoring a convocation to dedicate the School of Business Building as the "Lewis Ross Holland Hall. The dedication will be held Friday, Oct. 27 at 10:00 a.m. in the Auditorium of the Administration Building.

Gifts

G. E. Mainstream Goes to Engineering School

The General Electric Foundation donated its \$150,000 Mainstream Award to the School of Engineering at Tennessee State University, payable in equal amounts of \$30,000 over the five year period of 1978-82.

Dr. Edward Isibor, Dean of the School of Engineering, said that the donation will "help us to continue our efforts to fund activities as the center for excellence in engineering education."

The funds donated by the foundation will be used for 1) faculty development 2) reviewing the curriculum 3) student development 4) improving the delivery of instruction and 5) getting better acquainted with high school counselors.

The award is being made on the basis of a proposal for faculty development and enhanced counselor, teacher, parent interaction which was submitted on May 19, 1978.

The U. S. Tobacco Company donated \$250,000 to the Endowment Fund.

Bell Laboratories of Murray Hill, N. J. donated \$1,500 to the School of Engineering also to the School of Engineering comes \$2,000 from the Sun Petroleum Products Co., Philadelphia, Pa.

BUREAU OF PUBLIC RELATIONS

Accent is published each Monday through the fall and spring semester for the faculty and staff at the University. Deadline for inclusion is 10:00 a.m. each Tuesday.

Two Science Projects Funded by U.S.D.A.

Dr. Handy Williamson, Jr., Director of Cooperative Research at TSU recently received notification on the funding of two research projects from the Science and Education Administration/Cooperative research Division of the U.S. Department of Agriculture.

The two projects, which are a part of the Agriculture Research Program at TSU, will bring an additional \$301,521 in funding and support for those program activities initiated for the Fiscal Year of 1978.

Dr. F.S. Bagi, Research Associate in the Department of Rural development, will serve as Principal Investigator of the project entitled "An Economic Analysis of Total Resource Utilization, and Role of Credit on Limited Resource Farms in Tennessee," and will investigate farmer's decision-making processes and identify those resource limitations which contain managerial decisions. Dr. Alexander Wells, Assistant Professor in the Department of Biology, will serve as Principal Investigator of the project entitled "Drug Interaction Between Pesticides and CNS Depressants in Laboratory Mice and Pigs."

Funds Distribution Equity Delayed

Dr. Handy Williamson, Jr., director of the Cooperative Research Program on campus, has revealed the efforts recently initiated to achieve equity in the distribution of funds for cooperative research among historically Black Land-Grant Institutions has been delayed.

Under the Food and Agriculture Act of 1977, which ties the funding mechanism of agricultural research to the Hatch Act of 1862, several of the 1890 institutions could receive less funding than in previous years, although the total level of base appropriations would remain constant or increase, Dr. Williamson explained.

He stated that he had received a recent letter from Senator Herman Talmage, Chairman of the Committee on Agriculture, Nutrition, and Forestry, which expressed assurance that an amendment in support of the formula change would be one of the first orders of business to be taken up by the next Congress.

Board of Regents Approves \$5.6 Million

The Tennessee State Board of Regents, in their fall meeting held recently, approved over \$5.6 million capital improvement funds for Tennessee State University to renovate and construct new facilities on the TSU campus for 1979-80.

The capital budget request, which represents funding needed for eleven projects, will be transmitted to the Tennessee Higher Education Commission and the Governor's Office for consideration.

The capital projects include: \$500,000 in supplemental funds for new boiler and boiler renovations and construction of a new Engineering facility, Phase I for \$3,500,000. In the major category, the University received approval for \$141,000 to replace/repair roofs of five buildings; \$154,000 for fire safety connections in four buildings; \$225,000 to renovate the Administration Building; \$377,000 for building alterations-energy conservation; \$200,000 to repair steam distribution lines; \$40,000 to demolish the Barn and Hale Hall Storage; \$50,000 in new outside lights; \$300,000 for Campus Beautification and \$33,000 for improving designated areas. An \$85,000 agricultural request was approved to construct four greenhouses; one gross breeding greenhouse for Turf Management and three greenhouses for Ornamental Horticulture.

Call 320-3690

For Daily

Announcements

About TSU

Campus Fund Drive Is TSU Foundation's Forte

A campus-wide fund raising drive by the TSU Foundation gets underway October 18 according to Dr. Calvin O. Atchinson, Vice-president for Development and the Foundation's secretary-treasurer.

With a goal of \$14,500 in sight, the drive has already approached top administrators and middle-level managers and the October 18 date will make an appeal to all faculty and staff employees of the University.

Dr. Atchinson stated in the appeal letter:

"It is no secret that the traditional role of Tennessee State University, of identifying untapped potential in youth and assisting them to develop into outstanding leaders in their communities as well as the state and nation, it at the crossroads of public higher education.

Most of the administrators, faculty and students would agree that the direction from this point must be one of partnership among university family and our external constituencies. Thus, as we work more and more intensively to maintain strong viable programs and develop new ones we need, more than ever before, the support of the university family as well as all of our friends.

During the last two years, salaries continued to increase while operating budgets either remained the same, were reduced, or in some instances programs have been eliminated. The 1978-79 operating budget is below base line. Some departments will be handicapped if they have not obtained private or federal funds for operation.

WE NEED MORE STUDENTS--But we need scholarship money and unrestricted funds in order to attract more students.

Would it be asking too much of each employee at the University to give one-half (1/2) percent of his or her annual

salary; or five (5) percent of his or her salary increase of 1978-79 to the TSU Foundation Scholarship fund?

We do not assume that your donation to the University is automatic.

We hope that your concern for the University, for yourself, and for the students will strengthen your regard and motivate you to make this a priority in your investment. Those who are committed hold the key to the continued survival and prosperity of Tennessee State University. Only through personal dedication and contribution will the University surmount the hurdles it faces.

If we show that we care enough to help, then other friends, private industry and foundations will naturally adopt the same outlook.

Your gift will go to work immediately; it will increase enrollment, thereby increasing our state funds; it will help that student who otherwise might not have had a chance."

If We Don't, Who Will??

A Little Gift Can Be a Big Help



CAMPUS FUND DRIVE