

ACCENT

Faculty and Staff Publication

Volume 10, No. 2, February 18, 1981

University Reduction Committee Formed

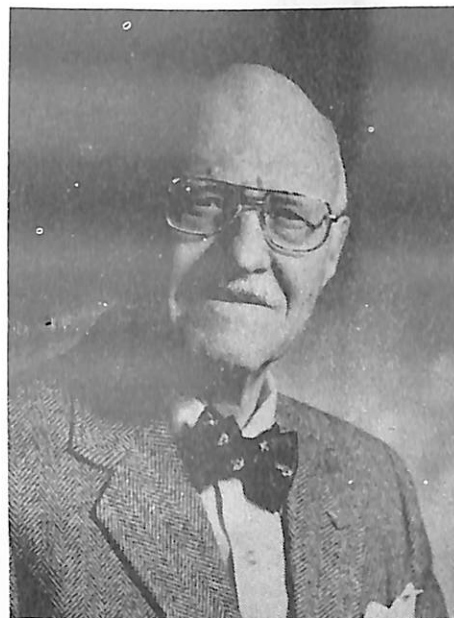
The 1981-82 budget is expected to be \$1.5 million less than the current year's budget. In a move designed to prepare the institution for the budget exigencies necessitated by dwindling state resources, Dr. Frederick S. Humphries has formed an institutional wide committee with responsibilities to recommend areas of the 1981-82 budget which can be reduced.

The committee is composed of seventeen members representing the faculty, staff, students and administration. Dr. James Ellzy, assistant dean for undergraduate programs and professor in the School of Business, is chairperson. Other members of the committee are: *Faculty:* Dr. John Propes, Dr. James Stewart, Dr. Martin Deschenes, Dr. Hazo Carter, Bill Perry, Dr. Pearl Dansby, Jean Jenkins and Dr. Paul Madden. *Staff:* Ruth Sanders, William

Hayes, Charlie Williams, Sr. *Students:* Alan Gore, Iris Jones, Gigi Peek. *Academics:* George Cox. *Public Service:* Ken Nye.

In making his charge to the committee, the President said, "It is not the intent that you in your recommendations be specific to the point of recommending personnel or specific area cuts. It is expected that your recommendations be broad categories of expenditures. I believe it to be appropriate that management make the specific choice with results in the actual reduction. The goal in making reductions is to leave the University in a stable operational mode that will provide needed services and meet accreditation requirements while maintaining growth potential."

The recommendations by the committee are due February 28



ERHARDT C. KOERPER

engineer, Robertshaw Control Company, Knoxville. The day will also be highlighted with exhibits, demonstrations and a reception.

The week long observance will begin on Monday, February 23 with an address by Erhardt C. Koerper, founder and former chairman of the board of Koerper Engineering Associates of Milwaukee, Wisconsin. Koerper is a director of the National Society of Professional Engineers which bears an award in his honor. The award is given each year to recognize outstanding engineering schools in the country. TSU was the 1980 recipient. Other opening day activities will include presentation of awards to outstanding students and a ribbon cutting ceremony.

On Tuesday, an open house, exhibits of the latest technology in industry and a seminar on engineering education are featured.

Thursday will feature a day of lectures, faculty roast and a student rap session. From the theme, "Engineers . . . searching for knowledge and wisdom for tomorrow's development," the week will conclude on Friday, February 27 with a seminar entitled, "Industry under Fire" and an All Engineers Banquet at the Opryland Hotel.

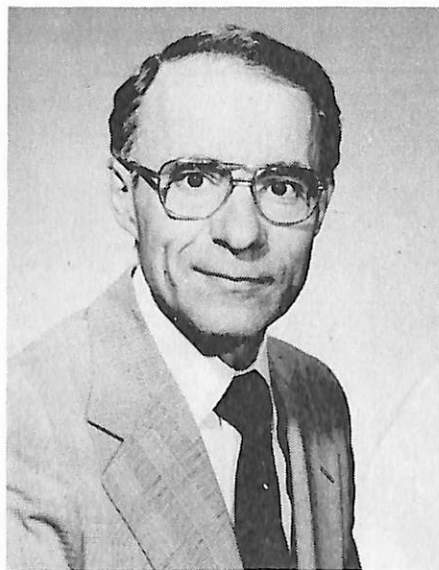
All campus events are free and open to the public.

Engineering Week Observance

George Washington, the first president of the United States, having the educational background of an eighteenth century civil engineer, was a land surveyor and designer of roads. It is for this reason that the week of George Washington's birthday has been set aside to observe National Engineers' Week. The National Engineers' Week is celebrated each year by professional engineers across the nation in honor of outstanding engineers; and also, to renew their commitment to society.

Arno Penzias, who shared the 1978 Nobel Prize in Physics for the 1964 discovery of evidence to support the big-bang theory of the origin of the universe, heads a list of scientists and engineers featured for the Fifth Annual observance of National Engineers' Week at Tennessee State University, February 23-27.

Dr. Penzias, who serves as the executive director of Bell Laboratories in Holmdel, New Jersey, will lecture on Wednesday,



DR. ARNO PENZIAS

February 5. Wednesday will also feature a panel discussion on the engineering industry. Speakers will be Robert Clement, a director on the Tennessee Valley Authority and B. Paul Sliger, chief project

ENGINEER IDA WATSON-YOUNG AND ASPIRING



IDA WATSON

Five years ago Ida Watson was designing systems and building highways for Tennessee's Department of Transportation Planning and Research Division. Today Ida, one of the University's first graduates of the master's in engineering program, enjoys teaching civil engineering at the University and says she wouldn't trade it for anything.

"I love teaching," said the native South Nashvillian. "There's just no end to the challenge that it offers."

Ida says she chose civil engineering for two reasons: her love for the outdoors and great interest in drawing.

"I've always liked to draw and paint portraits and landscapes. And I like the idea of doing floor plans," she said. "This was just the ideal career for me."

Watson teaches three classes in the department of civil engineering-transportation planning, surveying and engineering mechanics. She earned her BS degree in civil engineering from Tennessee Technological Institute. Immediately following graduate school she started working in research and planning for the state.

"As a matter of fact, the first day I walked into the personnel office I got the job," she said.

While working for the state, Ida says she decided to go back to school since it was very convenient to her job. She entered TSU on a part-time basis and within two years she'd earned her master's degree.

In addition to teaching, she is president and chief proponent of Brahman

Incorporated, a firm she and a friend established to meet the engineering consulting and planning needs of the Nashville area and its environs.

She is a member of the budget and finance committee of the University senate, chairman of the library committee for the School of Engineering and Technology, and acting advisor for student chapters of the American Society of Civil Engineers and the National Society of Black Engineers.

WELFARE TEACHING GRANT ADDS COURSES

The Department of Social Welfare has been awarded a Section 426 Child Welfare Teaching Grant for \$28,612 by the Department of Health and Human Services, Administration for Children, Youth and Families Division.

Waldean DeBerry, assistant professor of social welfare, is directing this project. "In a time of changing family roles and responsibilities in parenting relationships, the Department of Social Welfare is aware of the need for trained persons with competent skills in services to children and their families," said DeBerry. "This grant will aid the department in its commitment to expanding and revising its Generalist/Concentration in Child Welfare Curriculum to meet the contemporary needs for realistic practice in children and family services," she continued.

"Through the grant," DeBerry said, "the staff will be looking at the three major areas of course development, curricula

evaluation and revision and field instructions." They are particularly excited about two new courses they have developed: "Child Rearing Practices in Black Families," designed to examine biological, sociological and cultural aspects of black families with emphasis on attitude and behavior patterns of child care and "Intervention in Child Abuse and Neglect," designed to identify behaviors common to abuse and neglectful parent(s) with specific emphasis on the development of interventive skills for working with families.

It is the first time in the history of the Department of Social Welfare and the University that courses designed specifically in child abuse and neglect and parenting practices of black families, will be taught.

(Continued on Page 3)

Sexual Harassment Workshop Slated

"Sexual Harassment—Your Rights and Responsibilities," a one day workshop on sexual harassment in the work environment, will be held at the Downtown Campus, March 17. The workshop is sponsored by the School of Business, the Tennessee Learning Center and the Department of Conferences and Institutes.

The seminar will also give an overview of federal laws, supervisory responsibility and accountability, behavioral characteristics of the victim and other recourses, pertaining to sexual harassment.

For further information, contact the Department of Conference at 251-1523.



Waldean DeBerry and students examine abuse data

Disabled and Senior Citizen Privileges at TSU

Disabled persons suffering from a permanent total disability which totally incapacitates such person from working at an occupation which brings him/her an income and persons sixty (60) years of age or older, who are domiciled in Tennessee, may audit courses without paying tuition charges, maintenance fees, student activity fees, or registration fees. However, this privilege may be limited to or denied on an individual classroom basis according to space availability. Prior to admittance, the University may require an affidavit or certificate from a physician or an agency charged with compensating the disabled person or adjudicating the permanent total disability of the person requesting admittance to classes.

Subject to the same terms and conditions as provided above, disabled persons as defined above and persons sixty five (65) years of age or older, who are domiciled in Tennessee, may enroll in courses for credit without payment of tuition charges, maintenance fees, student activity fees or registration fees. However, such students must pay a per hour service fee, and all laboratory fees must be paid in full.

Senior citizens may also enroll in non-credit courses in the Division of Continuing Education on a free basis.

Media Appearances

Dr. Robert C. Vowels, professor of economics (School of Business), donned his cap as chairman of the Tennessee Commission of Human Development when he appeared on the initial showing of Channel 17's new monthly show, "Black Pulse," February 2. Dr. Vowels discussed the role of the Commission in handling discriminatory cases and the types of complaints received as well solutions. Carol Watson, former TSU faculty member and head of the Nashville Urban League, hosted the show.

###

Dr. Bobby Lovett, associate professor and acting department head-history, discussed black history on WVOL radio's "Straight Talk," hosted by W.C. Brown.

###

Dr. Edward I. Isibor, Dean, School of Engineering, will appear on: WSM radio's "In The Black," to talk about "Women In Engineering & TSU's Engineering School Progress" with hostess Camille Rucker on February 19, 2:00 pm; "Community," WSIX radio, describing the Engineering School's

Pan-Hellenic Council Aids The TSU Foundation



Iona Borders, senior mechanical engineering student and president of the Pan-hellenic Council, presents a \$750 check from the Council to Dr. Calvin Atchison for the TSU Foundation scholarship fund.

The Pan-hellenic Council consists of representatives from the eight major Greek organizations on the University's campus. Within restrictions set up by their national bodies and the University, this group sets up guidelines to govern pledging and various other activities sponsored by the organizations.

progress with hostess Earlene Zealey on February 22, 6:30 pm; and WVOL's "On The Line," to explain The Challenges And Opportunities In the 80's in Engineering Education. This show with host W.C. Brown will air February 22, from 12:00 noon-1:00 pm.

###

Toni C. DeBiase, instructor, Dental Hygiene, appeared on "The Noon Show," WSM-TV Channel 4, to announce Children's Dental Health Day at TSU. This show is hosted by Teddy Bart and Elaine Ganick.

###

Dr. Michael Samuchin, head, Department of Architectural Engineering will appear on "The Noon Show" WSM-TV Channel 4 to explain about National Engineering Week at TSU, on February 20, between 12:00 noon-1:00, pm hosted by Teddy Bart and Elaine Ganick.

The Council's primary purpose, however, is to be of service to the student body, the University and the community by providing student leadership, charitable drives, and social activities. Over half of the proceeds from the annual Greek Show are donated to selected charitable purposes. The recent \$750 gift to the Foundation represented 30% of the 1980 show's proceeds.

"The Foundation, in the final stages of the 80-81 campus drive, is extremely grateful to the Pan-hellenic Council representatives or this gift to be used by their peers," said Dr. Atchison.

In addition to this scholarship, the Council has also contributed to the University for sound equipment and to the Sickle Cell Anemia Foundation.

Welfare Teaching

(Continued from Page 2)

These courses will be required for social welfare majors who have elected to concentrate in child welfare. They will be open, however, to all social welfare majors and the general student body with a junior or senior classification, as electives. In addition, practitioners in the Department of Human Services and other agencies' personnel who wish to build their skills in the child welfare field may take the courses.

Individuals interested in enrolling in the courses should contact Waldean DeBerry (320-3645).

Upcoming Events

| | |
|---------------------|--|
| February 9-13 | Black History Week Celebration |
| February 19-20 | Mid-semester Examinations |
| February 23-27 | National Engineers' Week |
| February 23-25 | T.E. Poag Players present "You Can't Take It With You," A Auditorium, 8:15 pm |
| February 27-March 5 | Second Annual Arts Jamboree |
| March 6 | Last day to withdraw from course or University |
| March 9-13 | Spring Recess |
| May 5-8 | Final Examinations for spring semester |
| May 9 | Commencement Exercises |
| May 11-15 | Summer Faculty Institute |

Research Papers Needed

The papers to be presented at the Third Annual Research Day must be submitted in abstract form by February 16. Research Day will be held March 27th this year.

Please mail or bring Abstracts to: Dr. Robert H. Hudson dean, School of Arts and Sciences, Dr. M. Lipsey, associate dean, Division of Sciences—Women's Bldg. Rm. 38, or Dr. Jacqueline T. Martin, chairman Research Advisory Committee for School of Arts & Sciences—Department of Biology or Women's Bldg., Office F on the Main Campus or Dr. Paul DuBois, Government and Public Affairs, Suite C, on the Downtown Campus.

Abstract Form Instructions:

1. Your abstract should be informative, containing: (a) the study's specific objectives, unless this is given by the title; (b) a brief statement of methods, if pertinent; (c) a summary of the results and (d) conclusions.

2. Abstracts must be typewritten, *single-spaced*, 250 words or less. Type the title in capital letters. Underline the names and initials of all authors. Include the laboratory, city, state, and zip code where the research was done. Indicate source of research support at the end of the text.

NOTE: Student researchers require a faculty sponsor. Their research is competitive and winners will receive cash awards.

New Employees

The University welcomes new employees Marilyn Davis, to the Learning Resources Center, Diana E. Maines, to Extension and Continuing Education and Helen J. Robinson to the Career Development Center.

Second Annual Arts Jamboree

The musical comedy "Don't Bother Me, Can't Cope" inaugurates the Second Annual Arts Jamboree on February 27. Members of The American Performing Arts Workshop, Inc. will star in the 8:15 pm production in the A Building Auditorium, Main Campus.

Another highlight of the week's festivities, which run from February 27 through March 5, includes a performance by nationally acclaimed gospel singer Pearl Williams Jones on March 3.

Other celebrities, paintings and sculpture exhibits, fashions and talent are scheduled during the Jamboree.

Check your mailboxes and bulletin boards for further announcements of this event.

TSU Secretary Receives Award

Gladys Nelson, secretary to Dean John Masten in the School of Business, has received notice of an award from the State Employee Suggestion Board. She will be presented the award formally at the upcoming Awards Presentation Ceremony. Mrs. Nelson's suggestion was for the use of Intra-Campus envelopes.

Before her employment with TSU, Mrs. Nelson had been with UTN for a number of years.

"Career Girl Fashion Show"

Cain-Sloan is sponsoring a "Career Girl Fashion Show" on Thursday, February 19, in their downtown third floor activity room. The doors will open at 11:30 am and the fashion show will begin promptly at 12:10 pm so that it can end by 12:45 p.m. Admission is free. Bring a sandwich to eat with the complimentary iced tea and coconut cake.

If you would like to attend, call for reservations at 255-4651, ext. 4215.

The "Tiger's Den" Opens

The snack bar on the first floor of the Alumni Building has reopened under new management and a new name—"The Tiger's Den." Kathie and Jan Jones are there to serve you coffee, hot and cold sandwiches, pastries, all sorts of beverages, including juices and milk, fruit, penny candy and many other sundries between 8:00 am and 3:30 pm, Monday thru Friday.

GIFTS

The School of Engineering and Technology has received \$14,000 from Bell Laboratories and \$40,733 from the National Action Council for Minorities in Engineering, Inc.

###

Sun Company, Inc. gave \$200 to the student scholarship fund.

###

First Baptist Church (Alabama) gave a \$500 scholarship to Michael Shane Oates.

###

Scholarship Committee of Neighborhood House (New Jersey) gave \$300 to Aubrineice Fant.

###

The TSU National Alumni Association gave \$1,000 to the Foundation.

COPY DEADLINE

All copy for "This Month at TSU," the monthly calendar, must be received by the first week of the month preceding publication. The calendar information is handled separately from ACCENT and should be sent to University Community Relations, Downtown Campus, to the attention of Evelyn Merritt.

###

ACCENT is published the second Wednesday of each month. All copy for the monthly issue must be received by the first Monday of each month. Material received after that date will be included in the next month's issue.

Send your information to the Office of Public Relations, Goodwill Manor, Main Campus.

Editor Emeritus, Anne W. Bell
Editor, Mary M. Vowels