

Tennessee State University

Digital Scholarship @ Tennessee State University

Chemistry Faculty Research

Department of Chemistry

3-1-2014

2,9-Bis(5-sulfanylidene-4,5-dihydro-1,3,4-oxadiazol-2-yl)-1,10-phenanthroline dimethyl sulfoxide disolvate

Mohammad A. Rahman
Tennessee State University

Mohammad R. Karim
Tennessee State University

Md Arifuzzaman
Iowa State University

Tasneem Siddiquee
Tennessee State University

Lee M. Daniels
Agilent Technologies

Follow this and additional works at: <https://digitalscholarship.tnstate.edu/chemistry-faculty>

 Part of the [Chemistry Commons](#)

Recommended Citation

M. A. Rahman, M. Karim, M. Arifuzzaman, T. Siddiquee and L. M. Daniels "2,9-Bis(5-sulfanylidene-4,5-dihydro-1,3,4-oxadiazol-2-yl)-1,10-phenanthroline dimethyl sulfoxide disolvate" *Acta Cryst.* (2014). E70, o321-o322 <https://doi.org/10.1107/S1600536814003304>

This Article is brought to you for free and open access by the Department of Chemistry at Digital Scholarship @ Tennessee State University. It has been accepted for inclusion in Chemistry Faculty Research by an authorized administrator of Digital Scholarship @ Tennessee State University. For more information, please contact XGE@Tnstate.edu.

Acta Crystallographica Section E

Structure Reports

Online

ISSN 1600-5368

2,9-Bis(5-sulfanylidene-4,5-dihydro-1,3,4-oxadiazol-2-yl)-1,10-phenanthroline dimethyl sulfoxide disolvate

Md. A Rahman,^a Mohammad Karim,^a Md. Arifuzzaman,^b Tasneem Siddiquee^{a*} and Lee M. Daniels^c

^aDepartment of Chemistry, Boswell Science Complex, Tennessee State University, Nashville, 3500 John A. Merritt Blvd, Nashville, TN 37209, USA, ^bDepartment of Chemistry, Iowa State University, Ames, IA 50011-3111, USA, and ^cAgilent Technologies, 5301 Stevens Creek Blvd, Santa Clara, CA 95051, USA
Correspondence e-mail: tsiddiqu@tstate.edu

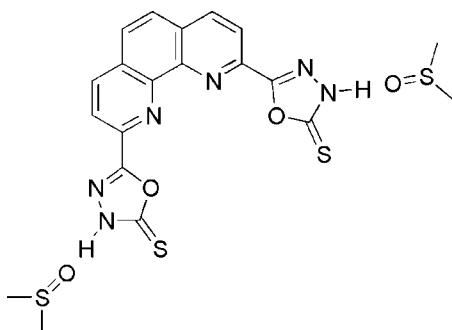
Received 29 January 2014; accepted 13 February 2014

Key indicators: single-crystal X-ray study; $T = 277$ K; mean $\sigma(\text{C}-\text{C}) = 0.005$ Å; disorder in solvent or counterion; R factor = 0.067; wR factor = 0.171; data-to-parameter ratio = 16.7.

In the title compound, $\text{C}_{16}\text{H}_8\text{N}_6\text{O}_2\text{S}_2 \cdot 2\text{C}_2\text{H}_6\text{OS}$, the phenanthroline molecule resides on a twofold axis, and the asymmetric unit also contains a slightly disordered [occupancy ratio for S atom of 0.95 (3):0.047 (3)] molecule of dimethyl sulfoxide. The O atoms of the solvent molecule accept hydrogen bonds from the N—H groups of the five-membered 2,3-dihydro-1,3,4-oxadiazole-2-thione ring. This ring is nearly coplanar with the phenanthroline ring, with a dihedral angle between their least-squares planes of 8.86 (6)°. In the crystal, the molecules are linked by C—H...O interactions.

Related literature

For the biological activity of the oxadiazole unit, see: Chen *et al.* (2000); Sun *et al.* (2013); El-Emam *et al.* (2004). For their anticancer activity, see: Zhang *et al.* (2011); Gudipati *et al.* (2011); Abou-Seri (2010). For related structures, see: Saeed *et al.* (2010); Fun *et al.* (2011); El-Emam *et al.* (2012, 2013).



Experimental

Crystal data

$\text{C}_{16}\text{H}_8\text{N}_6\text{O}_2\text{S}_2 \cdot 2\text{C}_2\text{H}_6\text{OS}$
 $M_r = 536.66$
 Monoclinic, $C2/c$
 $a = 14.113$ (11) Å
 $b = 11.161$ (8) Å
 $c = 16.708$ (12) Å
 $\beta = 112.837$ (14)°
 $V = 2425$ (3) Å³
 $Z = 4$
 Mo $K\alpha$ radiation
 $\mu = 0.43$ mm⁻¹
 $T = 277$ K
 $0.42 \times 0.26 \times 0.15$ mm

Data collection

Rigaku XtaLAB mini diffractometer
 Absorption correction: multi-scan (*CrystalClear*; Pflugrath, 1999)
 $T_{\min} = 0.840$, $T_{\max} = 0.938$
 5592 measured reflections
 2741 independent reflections
 1691 reflections with $I > 2\sigma(I)$
 $R_{\text{int}} = 0.039$

Refinement

$R[F^2 > 2\sigma(F^2)] = 0.067$
 $wR(F^2) = 0.171$
 $S = 1.03$
 2741 reflections
 164 parameters
 H atoms treated by a mixture of independent and constrained refinement
 $\Delta\rho_{\text{max}} = 0.30$ e Å⁻³
 $\Delta\rho_{\text{min}} = -0.59$ e Å⁻³

Table 1

Hydrogen-bond geometry (Å, °).

$D-H \cdots A$	$D-H$	$H \cdots A$	$D \cdots A$	$D-H \cdots A$
$\text{N2}-\text{H2} \cdots \text{O2}$	0.89 (4)	1.73 (4)	2.617 (4)	172 (4)
$\text{C9}-\text{H9C} \cdots \text{O1}^i$	0.96	2.62	3.399 (7)	138
$\text{C10}-\text{H10B} \cdots \text{O2}^{ii}$	0.96	2.57	3.317 (6)	135
$\text{N2}-\text{H2} \cdots \text{S2B}$	0.89 (4)	2.36 (5)	3.10 (3)	140 (3)

Symmetry codes: (i) $-x + \frac{1}{2}, -y + \frac{5}{2}, -z + 1$; (ii) $-x + \frac{1}{2}, y + \frac{1}{2}, -z + \frac{3}{2}$.

Data collection: *CrystalClear* (Pflugrath, 1999); cell refinement: *CrystalClear*; data reduction: *CrystalClear*; program(s) used to solve structure: *SHELXS97* (Sheldrick, 2008); program(s) used to refine structure: *SHELXL97* (Sheldrick, 2008); molecular graphics: *ORTEP-3 for Windows* (Farrugia, 2012); software used to prepare material for publication: *WinGX* (Farrugia, 2012) and *pubCIF* (Westrip, 2010).

MK and TS acknowledge the US Department of Education for the purchase of a diffractometer.

Supporting information for this paper is available from the IUCr electronic archives (Reference: FJ2661).

References

- Abou-Seri, S. M. (2010). *Eur. J. Med. Chem.* **45**, 4113–4121.
 Chen, H., Li, Z. & Han, Y. (2000). *J. Agric. Food Chem.* **48**, 5312–5316.
 El-Emam, A. A., Al-Deeb, O. A. & Al-Omar, M. (2004). *Bioorg. Med. Chem.* **12**, 5107–5113.
 El-Emam, A. A., Al-Omar, M. A., Al-Obaid, A.-R. M., Ng, S. W. & Tiekink, E. R. T. (2013). *Acta Cryst.* **E69**, o684.
 El-Emam, A. A., Kadi, A. A., El-Brollosy, N. R., Ng, S. W. & Tiekink, E. R. T. (2012). *Acta Cryst.* **E68**, o795.
 Farrugia, L. J. (2012). *J. Appl. Cryst.* **45**, 849–854.
 Fun, H.-K., Arshad, S., Samshuddin, S., Narayana, B. & Sarojini, B. K. (2011). *Acta Cryst.* **E67**, o3372.
 Gudipati, R., Anreddy, R. N. R. & Man, S. (2011). *Saudi Pharm. J.* **19**, 153–158.
 Pflugrath, J. W. (1999). *Acta Cryst.* **D55**, 1718–1725.
 Saeed, A., Akram, M., Rauf, A. & Bolte, M. (2010). *Acta Cryst.* **E66**, o1911.
 Sheldrick, G. M. (2008). *Acta Cryst.* **A64**, 112–122.

Sun, J., Zhu, H., Yang, Z. M. & Zhu, H. L. (2013). *Eur. J. Med. Chem.* **60**, 23–28.
Westrip, S. P. (2010). *J. Appl. Cryst.* **43**, 920–925.

Zhang, X.-M., Qiu, M., Sun, J., Zhang, Y.-B., Yang, Y.-S., Wang, X.-L., Tang, J.-F. & Zhu, H.-L. (2011). *Bioorg. Med. Chem.* **19**, 6518–6524.

supporting information

Acta Cryst. (2014). E70, o321–o322 [doi:10.1107/S1600536814003304]

2,9-Bis(5-sulfanylidene-4,5-dihydro-1,3,4-oxadiazol-2-yl)-1,10-phenanthroline dimethyl sulfoxide disolvate

Md. A Rahman, Mohammad Karim, Md. Arifuzzaman, Tasneem Siddiquee and Lee M. Daniels

S1. Comment

Compounds containing the oxadiazol moieties are known for their antimicrobial and anticancer activities. The title compound was prepared and characterized with the aim of synthesizing a series of compounds that are potentially active. These compounds were synthesized by a new process.

The title compound crystallized as a dimethyl sulfoxide (DMSO) solvate. The O atoms of the solvent form strong hydrogen bonds with the N—H centers of the diazole moiety.

The molecules are essentially planar, although the plane of the oxadiazolic five membered thionyl groups are slightly rotated from the phenanthroline plane (the two least-squares planes form an angle of 8.86 (5)°). The molecules are arranged in planar sheets, with each pair of thiol S atoms pointing at the two apical hydrogen atoms on the adjacent phenanthroline groups.

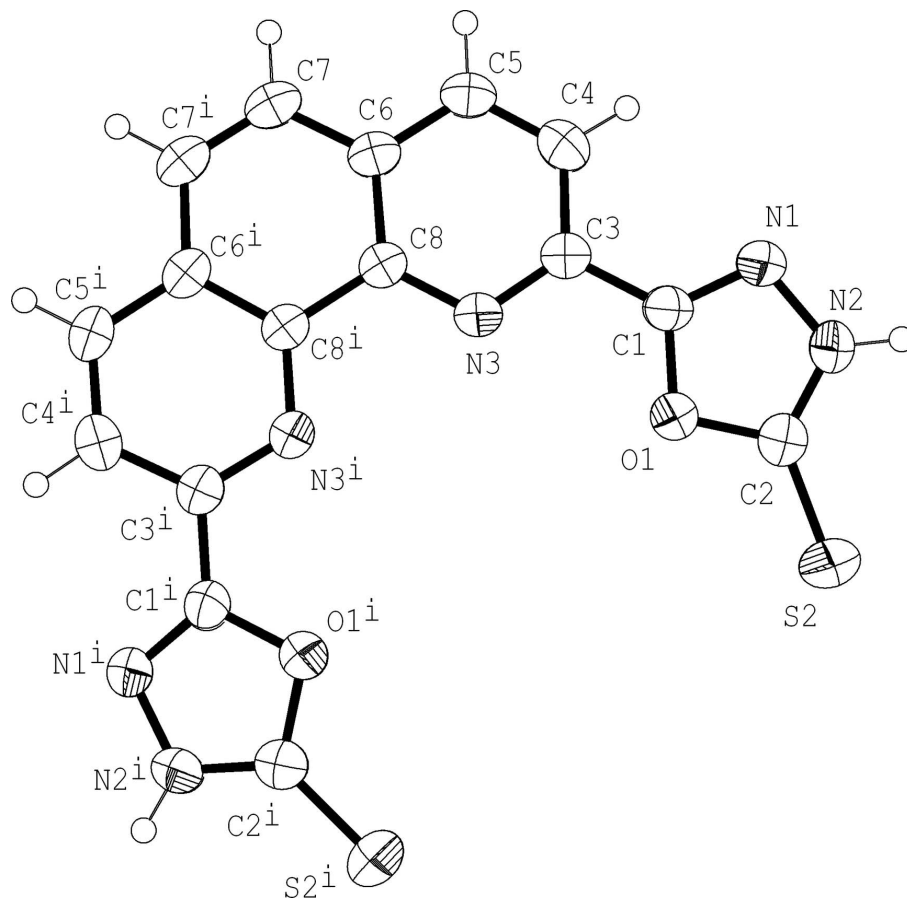
S2. Experimental

1,10-Phenanthroline-2,9-Di-S-methylhydrazinecarbodithioate (0.100 g, 0.21 mmol) was dissolved in THF (30 mL) with heat until a clear solution was formed. Then a solution of ZnCl₂ (0.015 g, 0.11 mmol) in THF (5 mL) was added dropwise to the carbodithioate solution. The resulting mixture was refluxed for 2–4 hrs. After completion of the reaction, as indicated by TLC, the reaction mixture was allowed to cool to room temperature. The solvent was evaporated under reduced pressure. The product was washed with ether and dried under vacuum. Recrystallization from DMSO yielded white crystals suitable for diffraction (0.076 g, 95%Y). ¹HNMR (DMSO-d₆, p.p.m.): δH 8.8 (d, 2H), 8.4(d, 2H), 8.2 (s, 2H). ¹³CNMR (DMSO-d₆, p.p.m.): δC 178, 159, 144, 141, 138, 130, 128, 122. IR ν (cm⁻¹): 3230 (N—H), 1196 (C—O), 3100–3000(C—H), 1600–1500 (aromatic C=C), 1373 (C=S).

S3. Refinement

One large residual peak near the DMSO solvent molecule appears to indicate an alternate position of the S atom (an inversion of the DMSO pyramid). The disorder of the S atom was refined to an occupancy of less than 5% for the minor position; the minor occupancy of the lighter atoms of the solvent molecule were not included in the model.

Non-hydrogen atoms were refined with anisotropic thermal parameters, and hydrogen atoms were included in calculated positions (riding model) with U_{iso} set to 1.2 times the U_{eq} of the parent atom. Refinement on F² by full-matrix least-squares resulted in R1 = 0.0727 and wR2 = 0.1729 for 2742 reflections with $I > 2\sigma(I)$.

**Figure 1**

Molecular structure showing 50% probability displacement ellipsoids. DMSO molecules are not shown

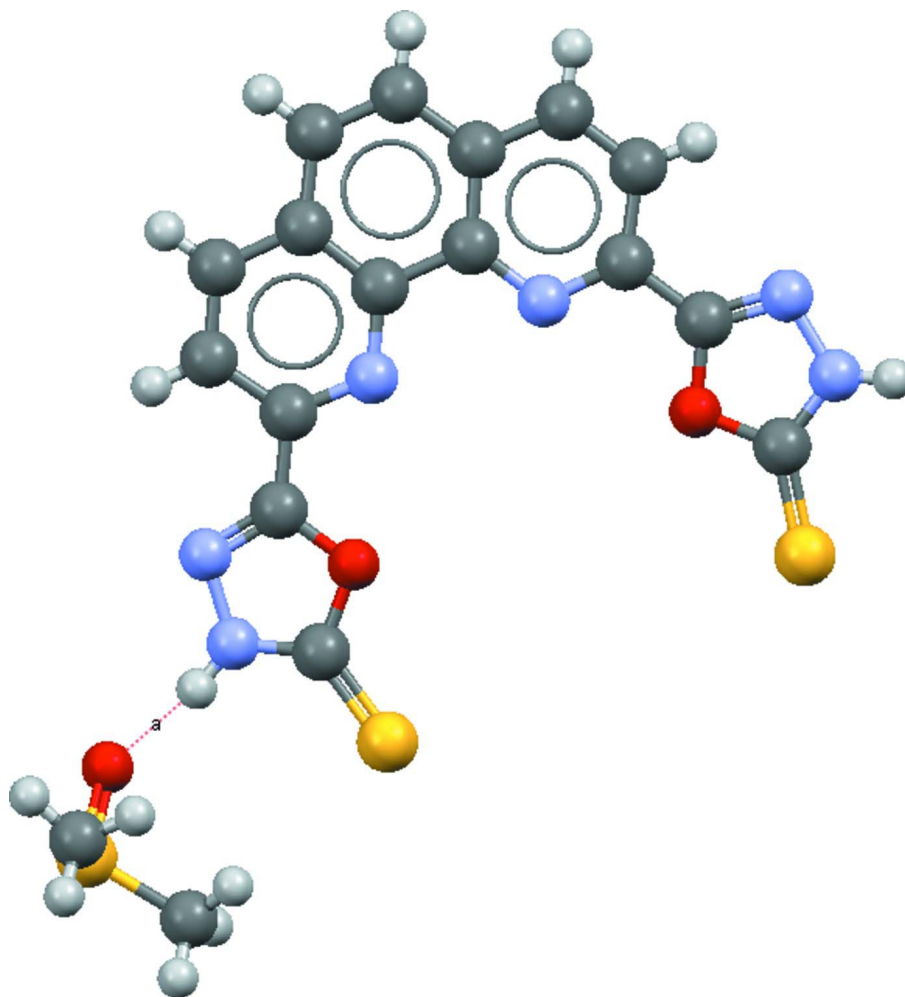


Figure 2
Hydrogen bonding interaction with a DMSO solvent molecule

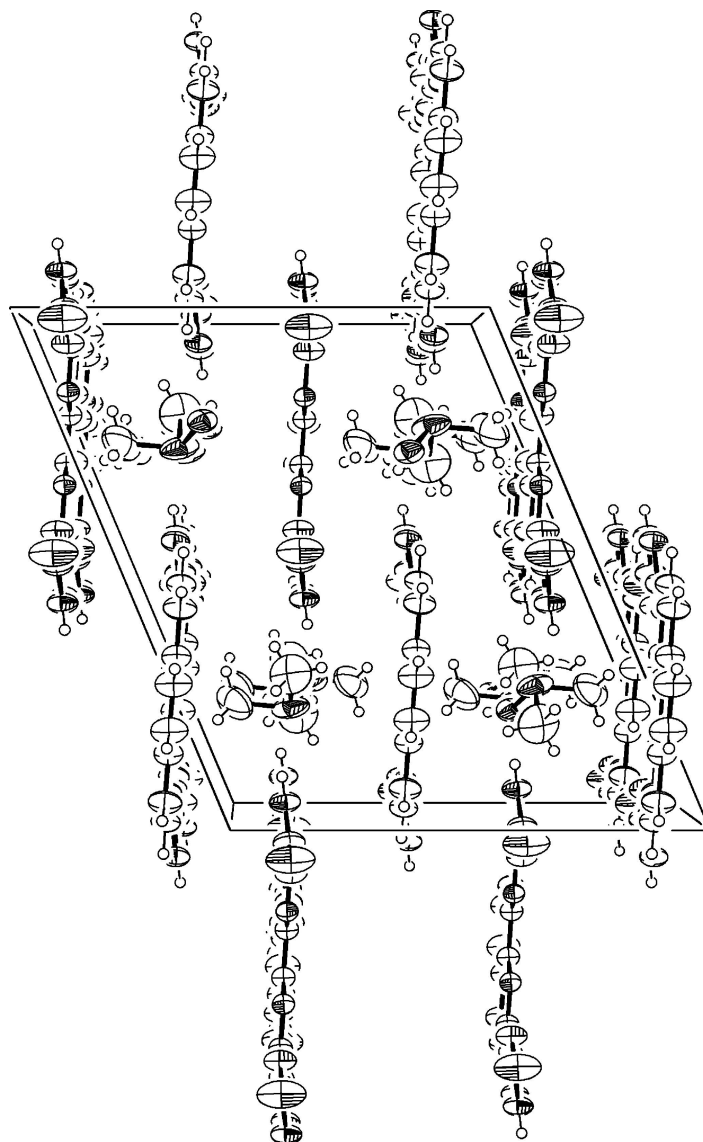


Figure 3

Packing diagram viewed along the normal to (101). Note the solvent molecules are positioned between two compounds making hydrogen bonding feasible

2,9-Bis(4,5-dihydro-1,3,4-oxadiazol-2-yl)-1,10-phenanthroline dimethyl sulfoxide disolvate

Crystal data

$C_{16}H_8N_6O_2S_2 \cdot 2C_2H_6OS$

$M_r = 536.66$

Monoclinic, $C2/c$

Hall symbol: $-C 2yc$

$a = 14.113 (11) \text{ \AA}$

$b = 11.161 (8) \text{ \AA}$

$c = 16.708 (12) \text{ \AA}$

$\beta = 112.837 (14)^\circ$

$V = 2425 (3) \text{ \AA}^3$

$Z = 4$

$F(000) = 1112$

$D_x = 1.47 \text{ Mg m}^{-3}$

Mo $K\alpha$ radiation, $\lambda = 0.71075 \text{ \AA}$

Cell parameters from 2562 reflections

$\theta = 3\text{--}27.7^\circ$

$\mu = 0.43 \text{ mm}^{-1}$

$T = 277 \text{ K}$

Prism, white

$0.42 \times 0.26 \times 0.15 \text{ mm}$

*Data collection*Rigaku XtaLAB mini
diffractometerGraphite monochromator
profile data from ω -scansAbsorption correction: multi-scan
(*CrystalClear*; Pflugrath, 1999) $T_{\min} = 0.840$, $T_{\max} = 0.938$

5592 measured reflections

2741 independent reflections

1691 reflections with $I > 2\sigma(I)$ $R_{\text{int}} = 0.039$ $\theta_{\max} = 27.5^\circ$, $\theta_{\min} = 3.0^\circ$ $h = -18 \rightarrow 16$ $k = -10 \rightarrow 14$ $l = -21 \rightarrow 17$ *Refinement*Refinement on F^2

Least-squares matrix: full

 $R[F^2 > 2\sigma(F^2)] = 0.067$ $wR(F^2) = 0.171$ $S = 1.03$

2741 reflections

164 parameters

0 restraints

Primary atom site location: structure-invariant
direct methodsSecondary atom site location: difference Fourier
mapHydrogen site location: inferred from
neighbouring sitesH atoms treated by a mixture of independent
and constrained refinement $w = 1/[\sigma^2(F_o^2) + (0.0524P)^2 + 6.1166P]$ where $P = (F_o^2 + 2F_c^2)/3$ $(\Delta/\sigma)_{\max} = 0.001$ $\Delta\rho_{\max} = 0.30 \text{ e } \text{\AA}^{-3}$ $\Delta\rho_{\min} = -0.59 \text{ e } \text{\AA}^{-3}$ *Special details*

Geometry. All s.u.'s (except the s.u. in the dihedral angle between two l.s. planes) are estimated using the full covariance matrix. The cell s.u.'s are taken into account individually in the estimation of s.u.'s in distances, angles and torsion angles; correlations between s.u.'s in cell parameters are only used when they are defined by crystal symmetry. An approximate (isotropic) treatment of cell s.u.'s is used for estimating s.u.'s involving l.s. planes.

Refinement. Refinement of F^2 against ALL reflections. The weighted R -factor wR and goodness of fit S are based on F^2 , conventional R -factors R are based on F , with F set to zero for negative F^2 . The threshold expression of $F^2 > 2\sigma(F^2)$ is used only for calculating R -factors(gt) *etc.* and is not relevant to the choice of reflections for refinement. R -factors based on F^2 are statistically about twice as large as those based on F , and R -factors based on ALL data will be even larger.

Fractional atomic coordinates and isotropic or equivalent isotropic displacement parameters (\AA^2)

	<i>x</i>	<i>y</i>	<i>z</i>	$U_{\text{iso}}^*/U_{\text{eq}}$	Occ. (<1)
S2	0.26830 (13)	1.33767 (13)	0.77108 (7)	0.0922 (6)	0.953 (3)
S2B	0.265 (2)	1.355 (3)	0.695 (2)	0.092*	0.047 (3)
O2	0.1971 (2)	1.2428 (2)	0.72136 (16)	0.0647 (8)	
C9	0.3844 (4)	1.3093 (7)	0.7638 (4)	0.140 (3)	
H9A	0.4190	1.2459	0.8031	0.211*	
H9B	0.4260	1.3803	0.7787	0.211*	
H9C	0.3730	1.2858	0.7055	0.211*	
C10	0.2382 (6)	1.4660 (5)	0.7056 (4)	0.130 (2)	
H10A	0.2309	1.4449	0.6478	0.195*	
H10B	0.2922	1.5238	0.7291	0.195*	
H10C	0.1748	1.4994	0.7041	0.195*	
S1	0.10833 (14)	1.36039 (10)	0.46674 (8)	0.1039 (6)	
O1	0.0925 (2)	1.1303 (2)	0.42720 (15)	0.0574 (7)	
N2	0.1421 (3)	1.1611 (3)	0.56291 (19)	0.0557 (8)	
N1	0.1384 (2)	1.0401 (2)	0.55250 (17)	0.0506 (7)	
N3	0.0448 (2)	0.9170 (2)	0.33922 (16)	0.0397 (6)	

C1	0.1091 (3)	1.0258 (3)	0.4711 (2)	0.0444 (8)
C6	0.0494 (3)	0.7019 (3)	0.3399 (2)	0.0520 (9)
C4	0.1181 (3)	0.8082 (3)	0.4726 (2)	0.0548 (9)
H4	0.1506	0.8106	0.5328	0.066*
C7	0.0238 (4)	0.5931 (3)	0.2927 (2)	0.0690 (12)
H7	0.0409	0.5206	0.3223	0.083*
C5	0.0973 (3)	0.7028 (3)	0.4299 (2)	0.0614 (11)
H5	0.1148	0.6311	0.4606	0.074*
C2	0.1163 (3)	1.2176 (3)	0.4891 (2)	0.0598 (10)
C8	0.0250 (3)	0.8122 (3)	0.2969 (2)	0.0425 (7)
C3	0.0899 (3)	0.9131 (3)	0.4245 (2)	0.0439 (8)
H2	0.164 (3)	1.195 (3)	0.616 (3)	0.062 (11)*

Atomic displacement parameters (Å²)

	U^{11}	U^{22}	U^{33}	U^{12}	U^{13}	U^{23}
S2	0.1324 (13)	0.1011 (10)	0.0456 (6)	-0.0709 (9)	0.0373 (7)	-0.0308 (6)
O2	0.0782 (19)	0.0651 (16)	0.0492 (14)	-0.0269 (14)	0.0228 (13)	-0.0169 (12)
C9	0.090 (4)	0.188 (7)	0.113 (5)	-0.065 (5)	0.007 (4)	0.027 (5)
C10	0.185 (7)	0.066 (3)	0.157 (6)	-0.052 (4)	0.085 (5)	-0.023 (4)
S1	0.1906 (17)	0.0392 (6)	0.0635 (7)	-0.0070 (7)	0.0292 (9)	0.0048 (5)
O1	0.0884 (19)	0.0388 (13)	0.0382 (13)	-0.0047 (12)	0.0170 (13)	0.0007 (10)
N2	0.081 (2)	0.0418 (16)	0.0369 (16)	-0.0088 (15)	0.0144 (15)	-0.0045 (13)
N1	0.069 (2)	0.0379 (14)	0.0381 (15)	-0.0046 (14)	0.0135 (14)	0.0010 (11)
N3	0.0452 (16)	0.0351 (14)	0.0379 (14)	0.0002 (11)	0.0151 (12)	0.0014 (10)
C1	0.052 (2)	0.0377 (17)	0.0382 (18)	-0.0035 (15)	0.0123 (15)	0.0050 (13)
C6	0.069 (2)	0.0350 (17)	0.0465 (19)	0.0037 (16)	0.0168 (17)	0.0037 (14)
C4	0.069 (3)	0.050 (2)	0.0354 (18)	0.0045 (18)	0.0087 (17)	0.0039 (15)
C7	0.109 (4)	0.0306 (17)	0.058 (2)	0.004 (2)	0.022 (2)	0.0056 (15)
C5	0.088 (3)	0.0379 (19)	0.047 (2)	0.0087 (19)	0.014 (2)	0.0112 (15)
C2	0.085 (3)	0.044 (2)	0.044 (2)	-0.0051 (19)	0.0176 (19)	-0.0021 (15)
C8	0.051 (2)	0.0338 (16)	0.0416 (17)	0.0002 (14)	0.0163 (15)	0.0008 (13)
C3	0.053 (2)	0.0374 (17)	0.0399 (17)	-0.0011 (15)	0.0162 (16)	0.0014 (13)

Geometric parameters (Å, °)

S2—O2	1.474 (3)	N1—C1	1.269 (4)
S2—C9	1.719 (7)	N3—C3	1.317 (4)
S2—C10	1.751 (6)	N3—C8	1.338 (4)
C9—H9A	0.9600	C1—C3	1.449 (4)
C9—H9B	0.9600	C6—C5	1.389 (5)
C9—H9C	0.9600	C6—C8	1.400 (4)
C10—H10A	0.9600	C6—C7	1.416 (5)
C10—H10B	0.9600	C4—C5	1.348 (5)
C10—H10C	0.9600	C4—C3	1.387 (5)
S1—C2	1.631 (4)	C4—H4	0.9300
O1—C1	1.348 (4)	C7—C7 ⁱ	1.321 (8)
O1—C2	1.365 (4)	C7—H7	0.9300

N2—C2	1.305 (5)	C5—H5	0.9300
N2—N1	1.360 (4)	C8—C8 ⁱ	1.448 (6)
N2—H2	0.89 (4)		
O2—S2—C9	106.7 (3)	O1—C1—C3	120.2 (3)
O2—S2—C10	106.7 (3)	C5—C6—C8	118.0 (3)
C9—S2—C10	96.5 (3)	C5—C6—C7	121.4 (3)
S2—C9—H9A	109.5	C8—C6—C7	120.6 (3)
S2—C9—H9B	109.5	C5—C4—C3	118.4 (3)
H9A—C9—H9B	109.5	C5—C4—H4	120.8
S2—C9—H9C	109.5	C3—C4—H4	120.8
H9A—C9—H9C	109.5	C7 ⁱ —C7—C6	121.0 (2)
H9B—C9—H9C	109.5	C7 ⁱ —C7—H7	119.5
S2—C10—H10A	109.5	C6—C7—H7	119.5
S2—C10—H10B	109.5	C4—C5—C6	119.6 (3)
H10A—C10—H10B	109.5	C4—C5—H5	120.2
S2—C10—H10C	109.5	C6—C5—H5	120.2
H10A—C10—H10C	109.5	N2—C2—O1	105.5 (3)
H10B—C10—H10C	109.5	N2—C2—S1	131.2 (3)
C1—O1—C2	105.4 (3)	O1—C2—S1	123.3 (3)
C2—N2—N1	112.1 (3)	N3—C8—C6	122.5 (3)
C2—N2—H2	126 (2)	N3—C8—C8 ⁱ	119.07 (17)
N1—N2—H2	122 (2)	C6—C8—C8 ⁱ	118.39 (19)
C1—N1—N2	104.0 (3)	N3—C3—C4	124.3 (3)
C3—N3—C8	117.2 (3)	N3—C3—C1	117.6 (3)
N1—C1—O1	112.9 (3)	C4—C3—C1	118.1 (3)
N1—C1—C3	126.8 (3)		
C2—N2—N1—C1	-0.5 (5)	C3—N3—C8—C6	0.7 (5)
N2—N1—C1—O1	-0.5 (4)	C3—N3—C8—C8 ⁱ	179.7 (4)
N2—N1—C1—C3	-178.3 (3)	C5—C6—C8—N3	-0.9 (6)
C2—O1—C1—N1	1.3 (4)	C7—C6—C8—N3	177.8 (4)
C2—O1—C1—C3	179.2 (3)	C5—C6—C8—C8 ⁱ	-180.0 (4)
C5—C6—C7—C7 ⁱ	178.4 (6)	C7—C6—C8—C8 ⁱ	-1.3 (6)
C8—C6—C7—C7 ⁱ	-0.2 (8)	C8—N3—C3—C4	0.2 (5)
C3—C4—C5—C6	0.5 (6)	C8—N3—C3—C1	-178.3 (3)
C8—C6—C5—C4	0.3 (6)	C5—C4—C3—N3	-0.8 (6)
C7—C6—C5—C4	-178.4 (4)	C5—C4—C3—C1	177.7 (4)
N1—N2—C2—O1	1.2 (5)	N1—C1—C3—N3	169.7 (4)
N1—N2—C2—S1	179.8 (4)	O1—C1—C3—N3	-7.9 (5)
C1—O1—C2—N2	-1.5 (4)	N1—C1—C3—C4	-9.0 (6)
C1—O1—C2—S1	179.8 (3)	O1—C1—C3—C4	173.4 (3)

Symmetry code: (i) $-x, y, -z+1/2$.

Hydrogen-bond geometry (\AA , $^\circ$)

$D-H\cdots A$	$D-H$	$H\cdots A$	$D\cdots A$	$D-H\cdots A$
N2—H2 \cdots O2	0.89 (4)	1.73 (4)	2.617 (4)	172 (4)

C9—H9C···O1 ⁱⁱ	0.96	2.62	3.399 (7)	138
C10—H10B···O2 ⁱⁱⁱ	0.96	2.57	3.317 (6)	135
N2—H2···S2B	0.89 (4)	2.36 (5)	3.10 (3)	140 (3)

Symmetry codes: (ii) $-x+1/2, -y+5/2, -z+1$; (iii) $-x+1/2, y+1/2, -z+3/2$.